

MAYNE

# HORIZON

---

## *Planter Collection*



### **30 inch Trough**

30" L x 15" W x 22" H  
15 Gal Soil Capacity

For further inquiries or additional information, kindly reach out:

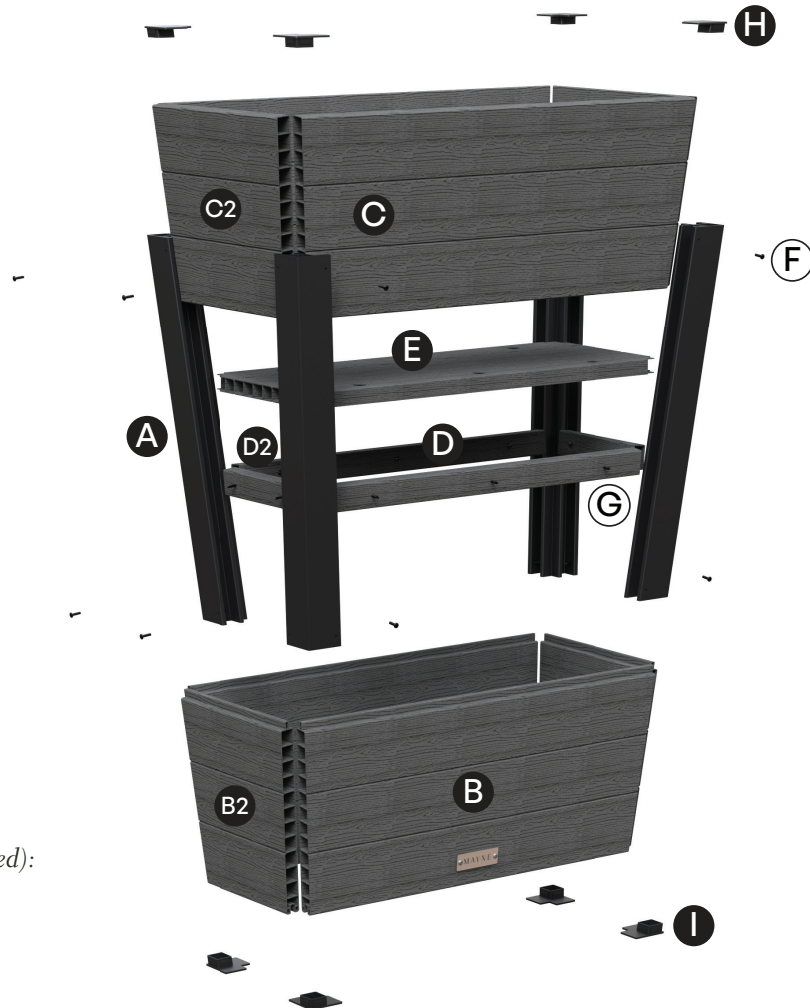
Toll Free Phone: 1-866-363-8834 • [customerservice@gomayne.com](mailto:customerservice@gomayne.com)



# PRODUCT INFORMATION

## Package Content:

*Inspect all the pieces to ensure you have everything.*



### Optional Tools (Not Provided):



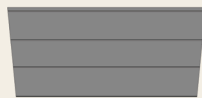
Small Hand  
Drill



Phillips  
Screwdriver Bit



**A** 4 x Corner Post  
MC2213



**B** 2 x Lower Panel  
MC2225



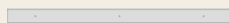
**B2** 2 x Side Lower Panel  
MC2224



**C** 2 x Upper Panel  
MC2227



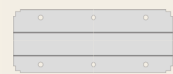
**C2** 2 x Side Upper Panel  
MC2226



**D** 2 x Long Support  
MC2229



**D2** 2 x Side Support  
MC2228



**E** 1 x Planting Shelf  
MC2230



**F** 16 x Small Screw



**G** 10 x Long Screw



**H** 4 x Top Cap  
MC2211



**I** 4 x Bottom Cap  
MC2212

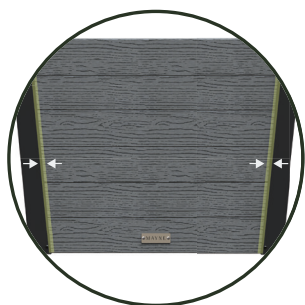


# STEP-BY-STEP ASSEMBLY

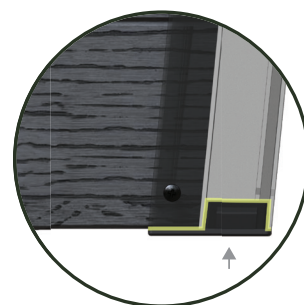
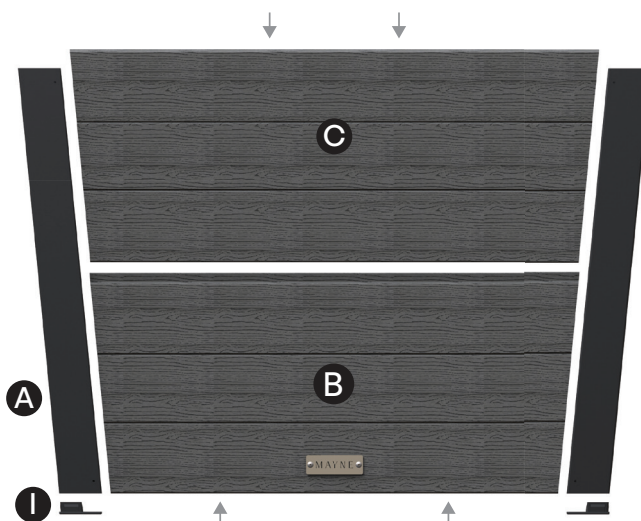
Read the instructions before assembly.

## 1 Assemble the Side Panels

Press the bottom caps (I) onto the bottoms of the corner posts (A). Align the two posts. Insert the lower panel (B), then the upper panel (C). Ensure everything is flush at the bottom.



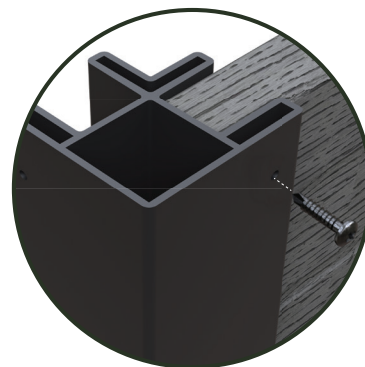
*Ensure the corner posts are pressed firmly against the panels before screwing them in.*



*Make sure each bottom cap is fully inserted into the post.*

## 2 Secure Panels

Fasten the corner posts and panels with small screws (F). Repeat Steps 1 and 2 to build a second set.



*Note: Screws will drive directly into the posts.*

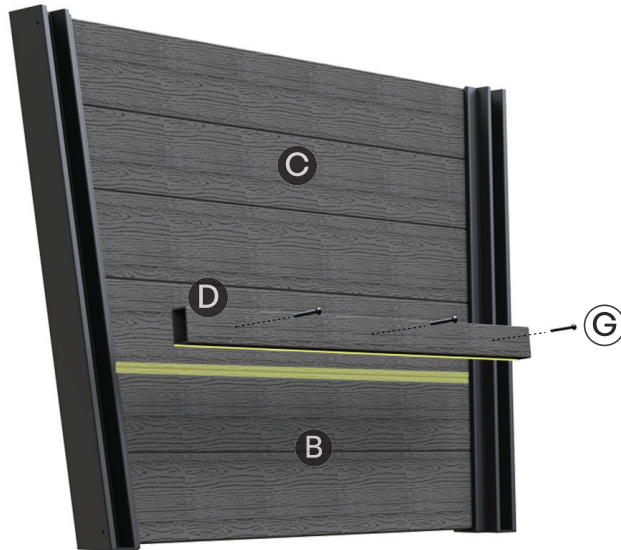


# STEP-BY-STEP ASSEMBLY

Read the instructions before assembly.

## 3 Attach Inside Support for Long Side

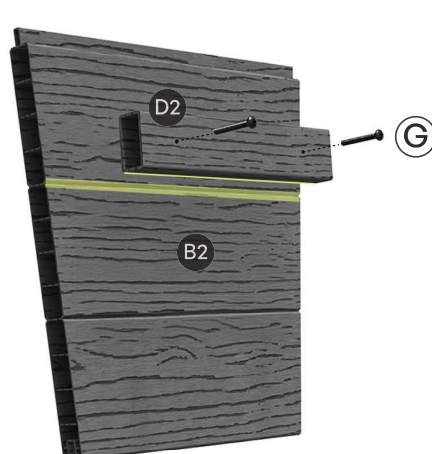
Align the long support (D) with the second groove from the bottom, as shown below. Secure it to the panel using long screws (G). Make sure it is centered and level. Repeat for the second assembly.



*Screws are self-tapping and will drive directly into the panel.*

## 4 Attach Inside Support for Short Side

Align the side support (D2) with the second groove from the bottom on a side lower panel (B2), as shown. Ensure it is centered and level, then secure it using long screws (G). Repeat this process on the second Side Lower Panel (B2).



*Screws are self-tapping and will drive directly into the panel.*



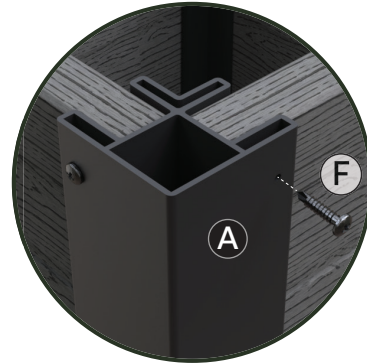


# STEP-BY-STEP ASSEMBLY

Read the instructions before assembly.

## 5 Install Side Panels

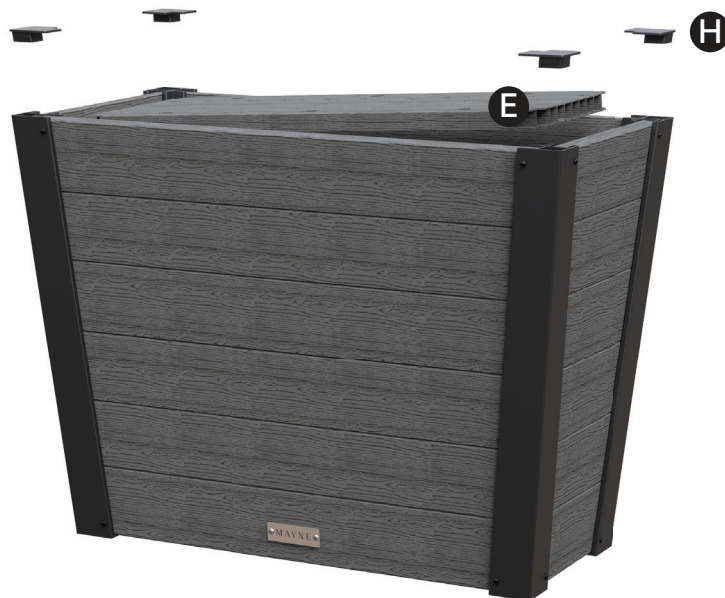
To connect the two assembled short sides, slide the side lower panel (B2) into the bottom grooves on the long sides, then slide the upper panel (C2) into the top grooves above it. Secure both panels to the corner posts using small screws (F).



*Make sure the panels sit flush before securing them using screws.*

## 6 Add Top Caps and Planting Base

Attach the top caps (H) to each corner post (A). Place the planting shelf (E) inside the planter, making sure it rests securely on top of the inside supports (D and D2).





# STEP-BY-STEP ASSEMBLY

Read the instructions before assembly.

## 7 Bring Your Planter to Life

Your planter is ready to use. Fill it with potting soil and add your favorite flowers, herbs, or greenery. Tip: Visit [gomayne.com/pages/faq](http://gomayne.com/pages/faq) for more planting tips and care advice.



# Horizon Collection

Expand horizons and redefine outdoor elegance



## All Seasons

Endure every season with lasting strength



## Sure Fit

Assembles with ease for a strong, secure, lasting hold



## Modern Design

A fresh, modern look grounded in timeless charm



## Warranty Plus

Backed by a 10-year warranty for peace of mind

## General Planting Recommendation:

To get the most out of your planter, follow these steps:

1. Add Lightweight Filler (Optional but beneficial)
  - Start by adding a few inches of lightweight filler to the bottom of your planter. This step is optional but offers three key benefits:
    - Reduces Potting Mix Usage: Saves on the amount of potting mix needed.
    - Encourages Root Growth: Promotes faster root growth down into the troughs.
    - Lightweight Options: Use materials like mulch, wood chips, crushed water bottles, or foam packing peanuts (avoid foam peanuts if growing edible plants).
2. Fill with Potting Mix
  - Fill the planter with potting mix, leaving about an inch from the top. Avoid using regular garden soil as it compacts easily and doesn't provide adequate aeration or drainage.

## Cleaning & Care Guide:

A little care goes a long way. At the start of each season, give your planter a quick rinse to clear away dust and debris. For a deeper refresh, gently clean with mild soap, water, and a soft cloth—or use a pressure washer on a low setting. Rinse thoroughly and let it dry fully. With simple upkeep, your planter will continue to bring beauty and ease to your outdoor space, season after season.

*NOTE: Results vary by plant type and root depth. Mayne holds no liability for plant growth. For tips, visit [www.gomayne.com](http://www.gomayne.com).*



[www.gomayne.com](http://www.gomayne.com)  
7024 Kilbourne Rd Unit A  
London, ON N6P 1K6